

GRAPHITE INDIA LIMITED WHITEFIELD, BANGALORE, KARNATAKA

INTRODUCTION TO THE ISSUE

Residents of Whitefield say that Graphite India did not bother to take preventive measures for areas where layers of bare soil (graphite particulate matter) had been settling on food, shade houses, shops and all around the factory area.

CASE FILED AGAINST GIL

In the initial lawsuit, Suresh Narain, the head of the Centre for Science and Environment, had filed an application, which was brought by members of the citizen organization Whitefield Rising. The initial court order directed GIL to stop producing and releasing particulate matter since it had lower sulfur content.

The bench, which included Justices Madan B. Lokar and Deepak Dhanraj, rejected GIL's contention that pollution and particulate were unrelated issues.

AIR QUALITY

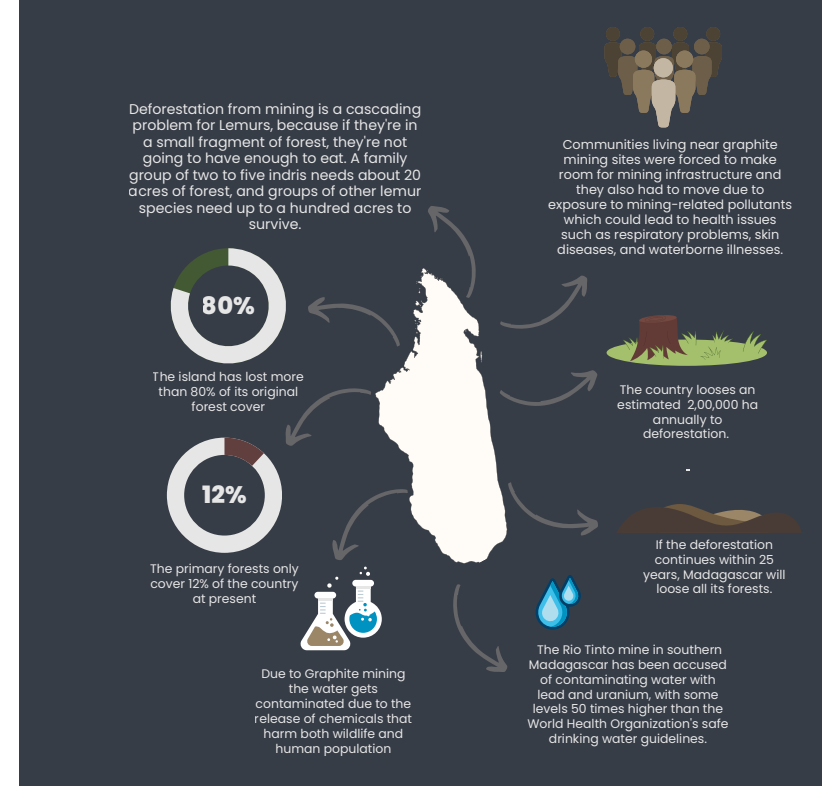
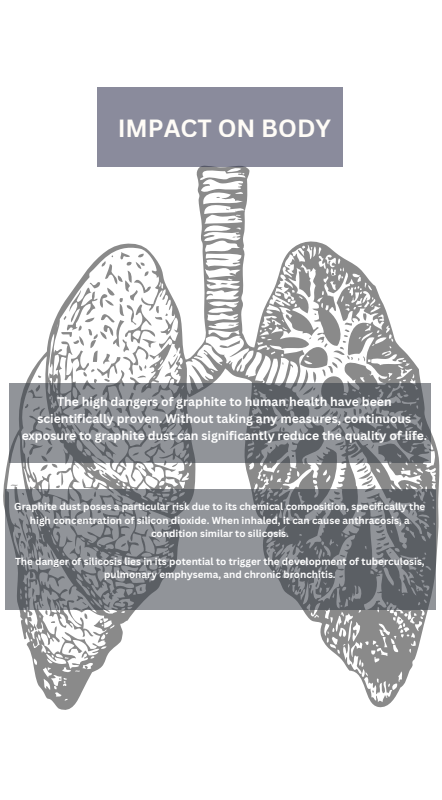
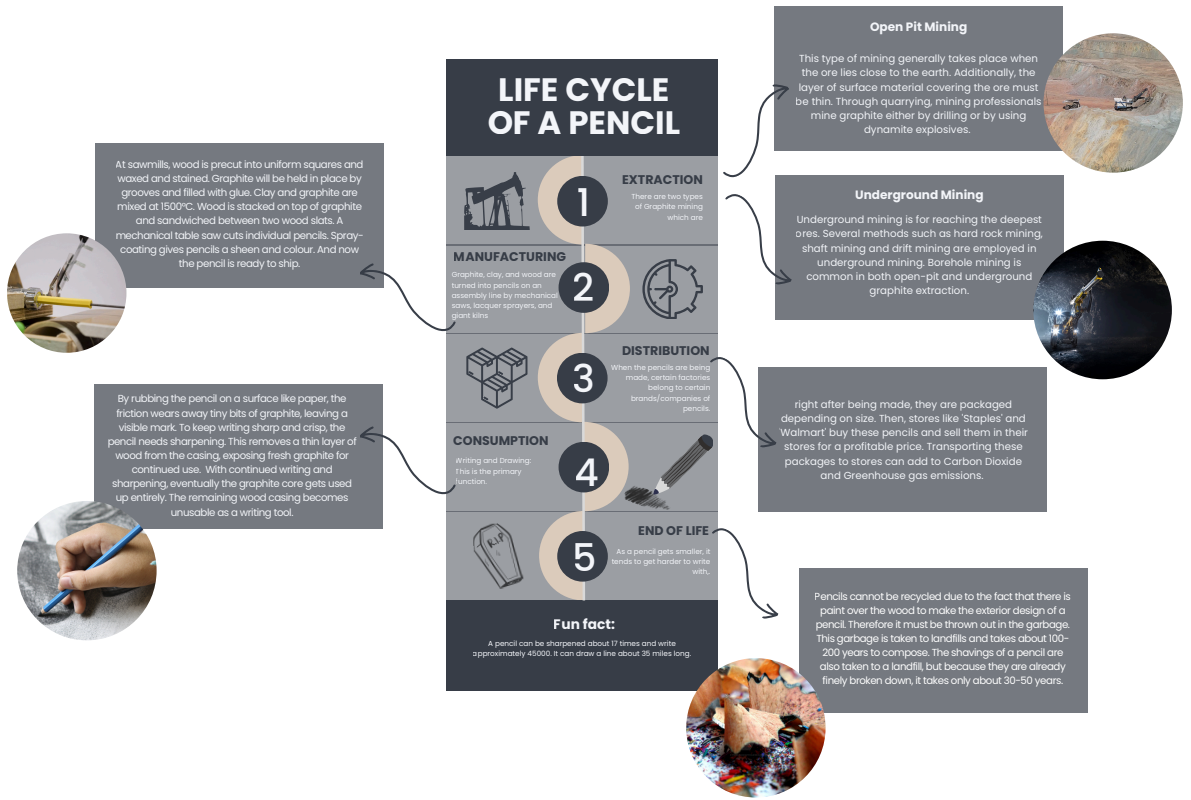
35% ↑ Increase in Respiratory Illnesses

60% ↑ PM10 particulate due to dust storm

90% ↑ PM2.5 particulate due to dust storm

MAJOR EVENTS

- Factory did not abide by the conditions laid out by the Centre for Science and Environment (CSE)
- The Supreme Court had to compare to pay Rs 20 lakh per day to the Centre for Science and Environment (CSE)
- The Supreme Court ordered GIL to stop producing and releasing particulate matter since it had lower sulfur content



PM 2.5

PM 2.5, is the key constituent of pollutants. PM stands for particulate matter (also called particle pollution): the term for a mixture of solid particles and liquid droplets found in the air, such as dust, dirt, soot, or smoke, which are large or dark enough to be seen with the naked eye.

Particulate matter contains microscopic solids or liquid droplets that are so small that they can be inhaled and cause serious health problems. Some particles less than 10 micrometers in diameter can get deep into your lungs and some may even get into your bloodstream.

Major Air Pollutants in Whitefield

64 PM10s	154 PM2.5s	3 SO2s
442 COs	20 Ozone	29 NO2s
4.3X		

The current PM2.5 concentration in Whitefield is 4.3 times above the recommended limit given by the WHO 24 hr. air quality guidelines value.

Graphite India, a prominent graphite electrode manufacturer, had a plant in Whitefield, Bangalore, that was known to emit pollutants into the surrounding environment. One of the major pollutants associated with such industrial operations is particulate matter, which includes fine particles such as PM10 and PM2.5. These particles can be released during the manufacturing process and can have detrimental effects on air quality and human health.